

## UV30429 - Enhance Nails Using Electric Files

### **1. Which of the following would offer the most suitable environmental conditions for nail enhancement**

- Good lighting and a professional ventilation system

### **2. Electric files may be preferred to manual files because**

- they can cut down on treatment time

### **3. A large barrel bit is used for**

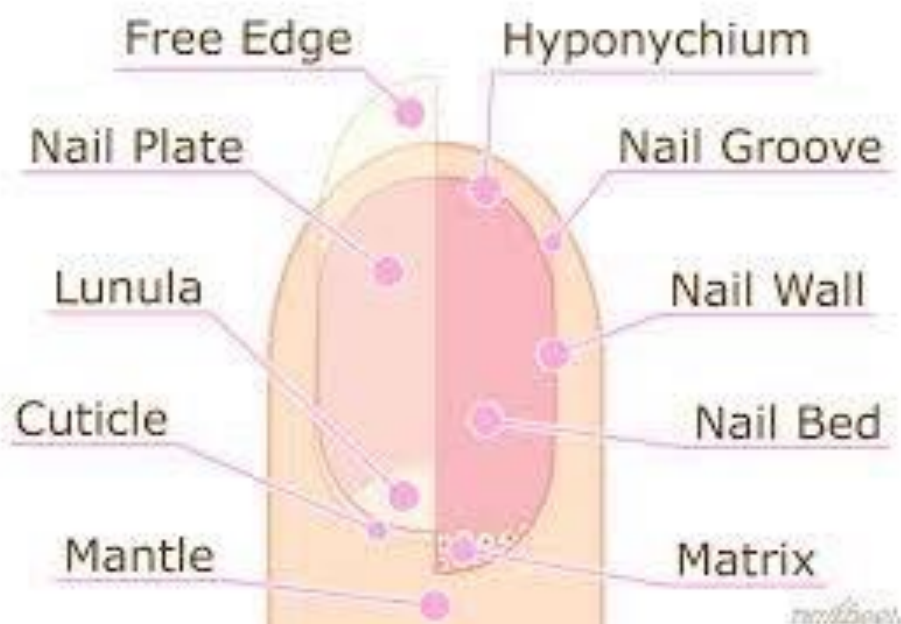
- backfilling by trenching

### **4. Which of the following statements describes the correct use of an electric file? Moving the electric file in**

- one direction whilst the rotation of the file attachment is in the opposite direction to working

### **5. Electric files should not be used for**

- blending nail tips



**9. Tinea Unguium is caused by**

- a bacterial infection

**10. Incorrectly operating an electric file could lead to**

- temporary burnin<sup>g</sup> sensation and long term thinning of the nail plate

**11. Electric files should not be used on natural nails because**

- it can cause damage to the nail plate

**12. The client is starting to cough whilst the technician is using the electric file. What course of action should the technician take?**

- Stop the treatment, offer the client a glass of water and resume with the treatment using a manual file

**13. Whilst using the electric file, the technician loses grip of the client's fingers, causing injury to the client. What is the most likely reason**

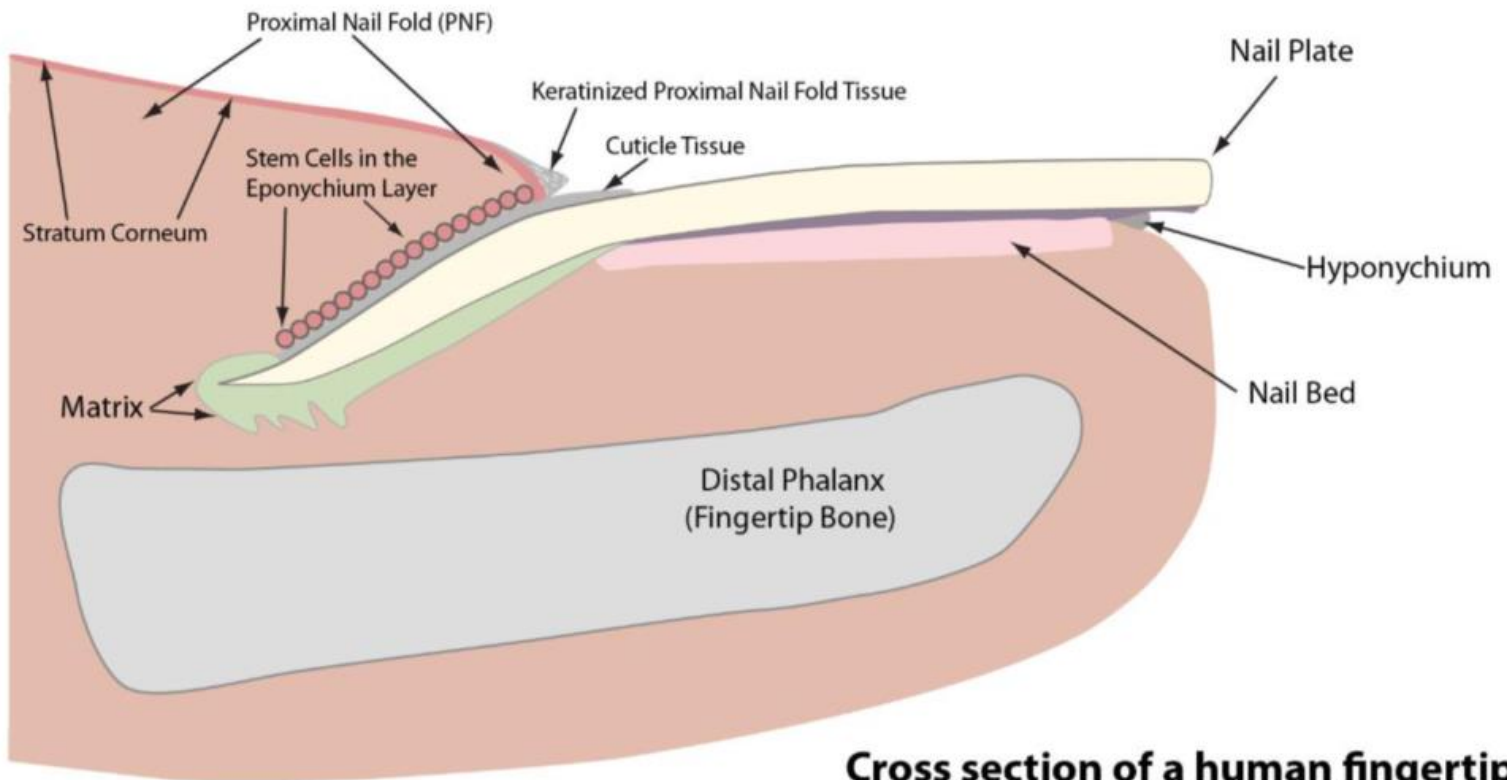
- Failure to hold the fingers firmly and maintaining three points of contact with the client

**14. What is the main health risk associated with overexposure to dust? Developing**

- respiratory disorders

15. Enamel remover, acetone and surgical spirit are examples of products that are governed by which of the following Regulations?

- COSHH



**Cross section of a human fingertip  
(Rev. 3)**